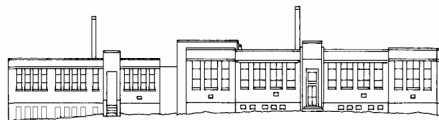




Franklin Union Baptist Church
Circa 1885
Fox Hollow Road



Roofner Farm/White's Antiques
Silo 1925 Building 2000
Bear St.



Worthington West Franklin Twp. High School
Circa 1931
East Main Street



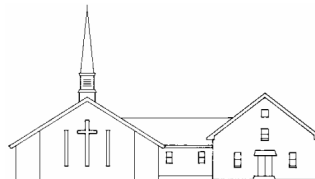
Claypoole/South Creek Farm
Wagon Shed 1845, Barn 1914, House 1923
Claypoole Road



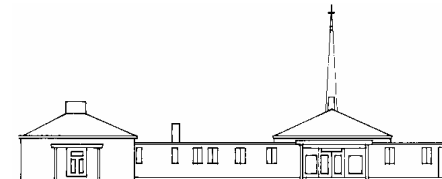
Peter Graff Memorial Chapel
Circa 1892
West Main St.



Worthington Lutheran Church
Circa 1889
West Main St.



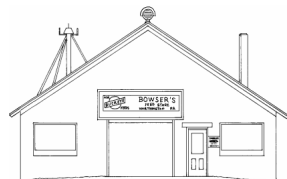
Worthington Baptist Church
Circa 1974/1933
Ross Street



Worthington Presbyterian Church
Circa 1968
Linton Street



United States Post Office
Circa 1962
Main St.



Bowser's Feed Store
Circa 1945
Main St.



Worthington Hardware
Circa 1951
Main St.



Old Stone Tavern
Circa 1820
Main St.



Long's Worthington Market
Circa 1890- Rebuilt 1906
Main St.



Peter Graff House
Circa 1840
West Main St.



The town of Worthington was laid out on a tract of land called Mt. Lorenzo. Two old signs, reading Mt. Lorenzo with the elevation, were at each end of town for many years. They were up as late as the 1950's.



Merchants National Bank Worthington Office
Circa 1967
Route 422